

* Radio frequency commonly used for XC :
477.225 (channel 33) or 133.35 (airband)

* Radio used by air traffic (airband)
Wanaka CFZ 120.1 Mhz
Fiordland CFZ 119.2 Mhz

* Airspace at take-off at 13.500 ft
Airspace at Roys Peak at 9.500 ft

!! indication only - REFER to VNC
for OFFICIAL INFORMATION about
airspace and radio frequencies !!

* Do not forget to sign out of
Zero Harm Farm once out of TC

Most common
paragliding routes

Less common
paragliding routes

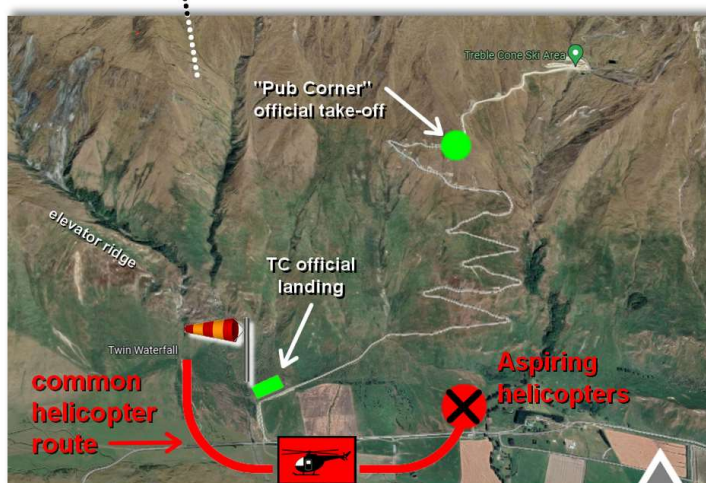
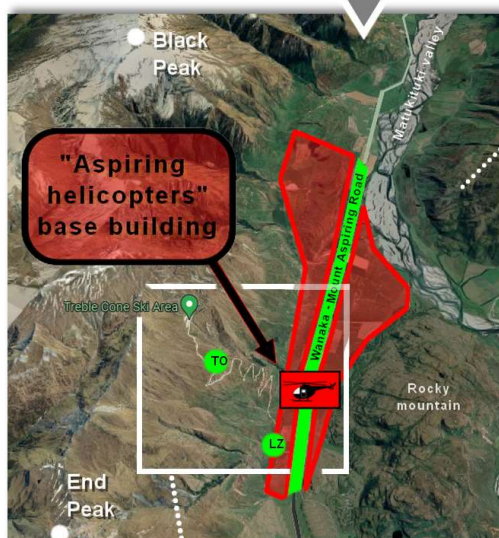
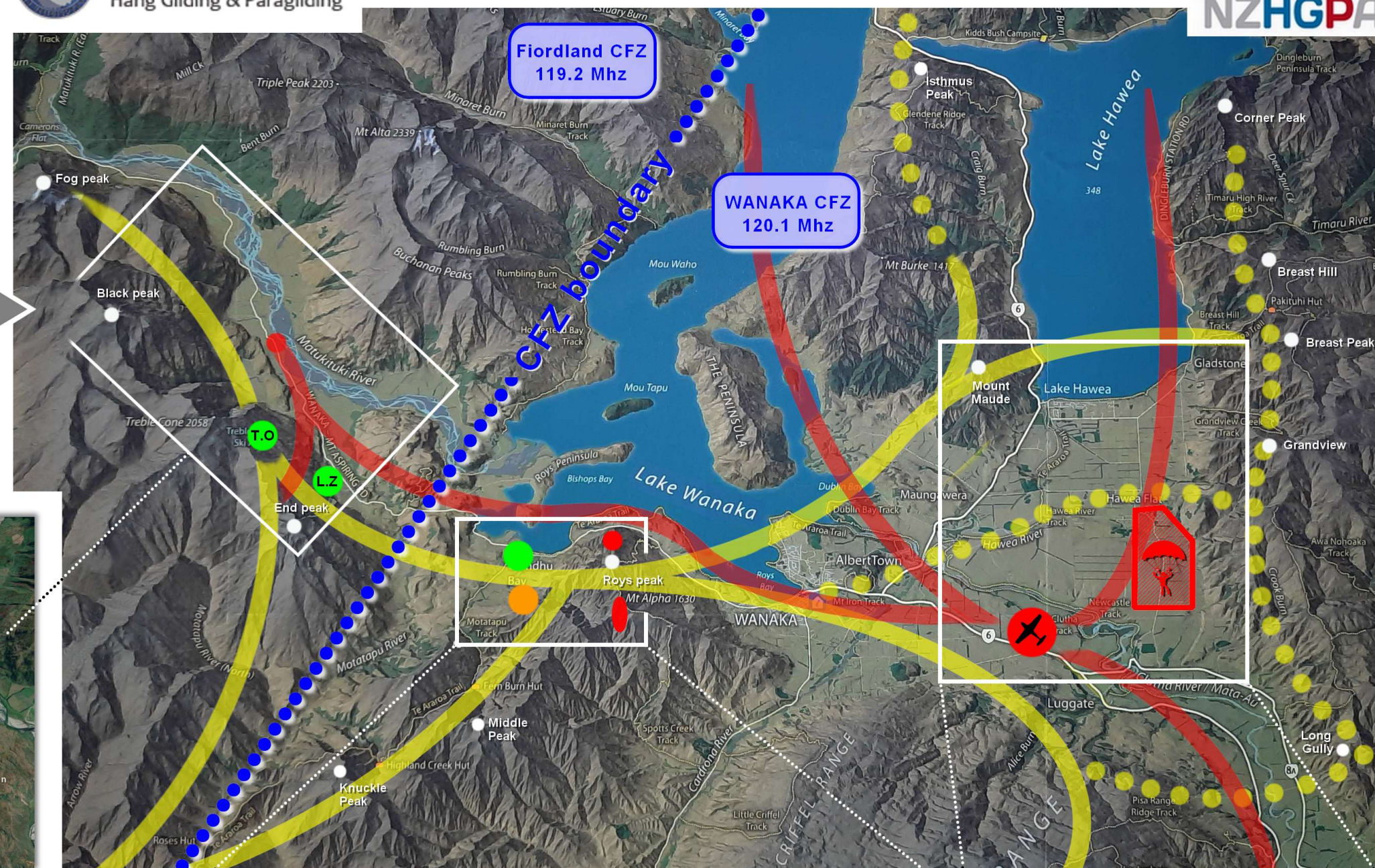
Most common planes
& helicopter routes

Do not land in red area below or
near 'Aspiring helicopters' building.
Landing has to be in the official LZ
or on the side of the road

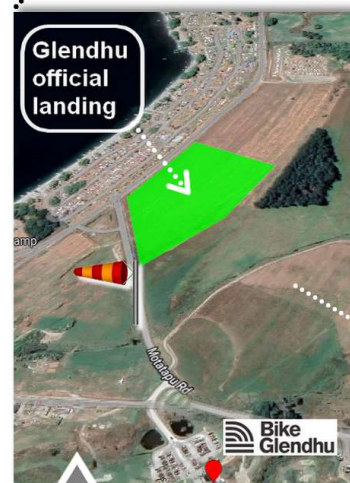


SOUTHERN CLUB
Hang Gliding & Paragliding

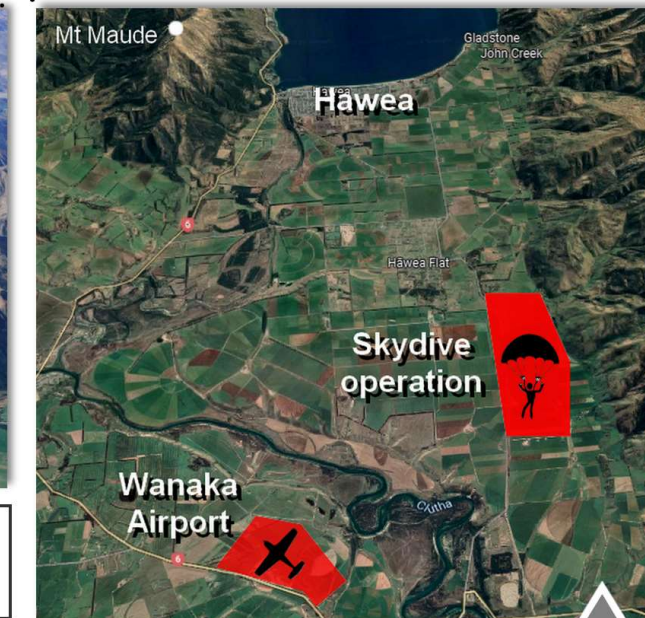
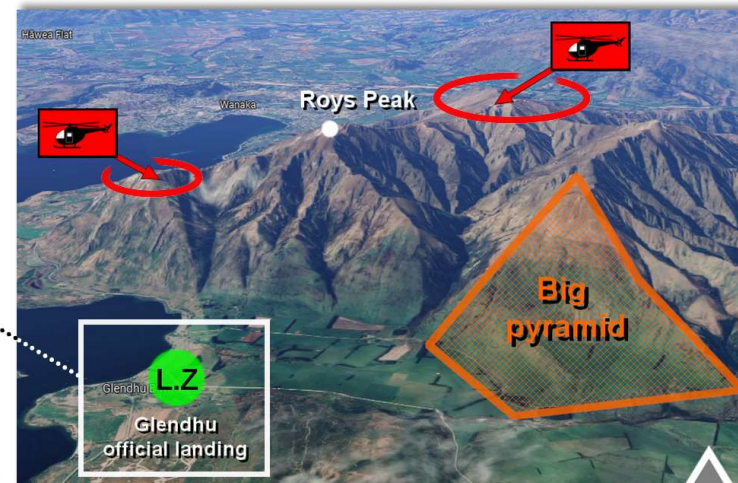
Treble Cone information for paragliding flights



-Official take-off at 'Pub corner' at 3600 ft (1097m)
-Official landing by the road
-!! Carreful of helicopters operations to drop people to the waterfalls - Do NOT land near Aspiring Helicopters base building - operation can be monitored on 119.2 Mhz



-Official landing available in paddock between campsite and "Bike Glendhu"
!! Carreful of helicopters operations to drop people on Coromandel Peak and on the Mt Alpha ridge (airband CFZ 120.1 Mhz) - NB : do not fly over "Big Pyramid" during fawning (December/January)



When crossing to Pisa or Hawea ranges, be careful of the Wanaka airport and the skydive operation - Traffic can be monitored on 120.1 Mhz