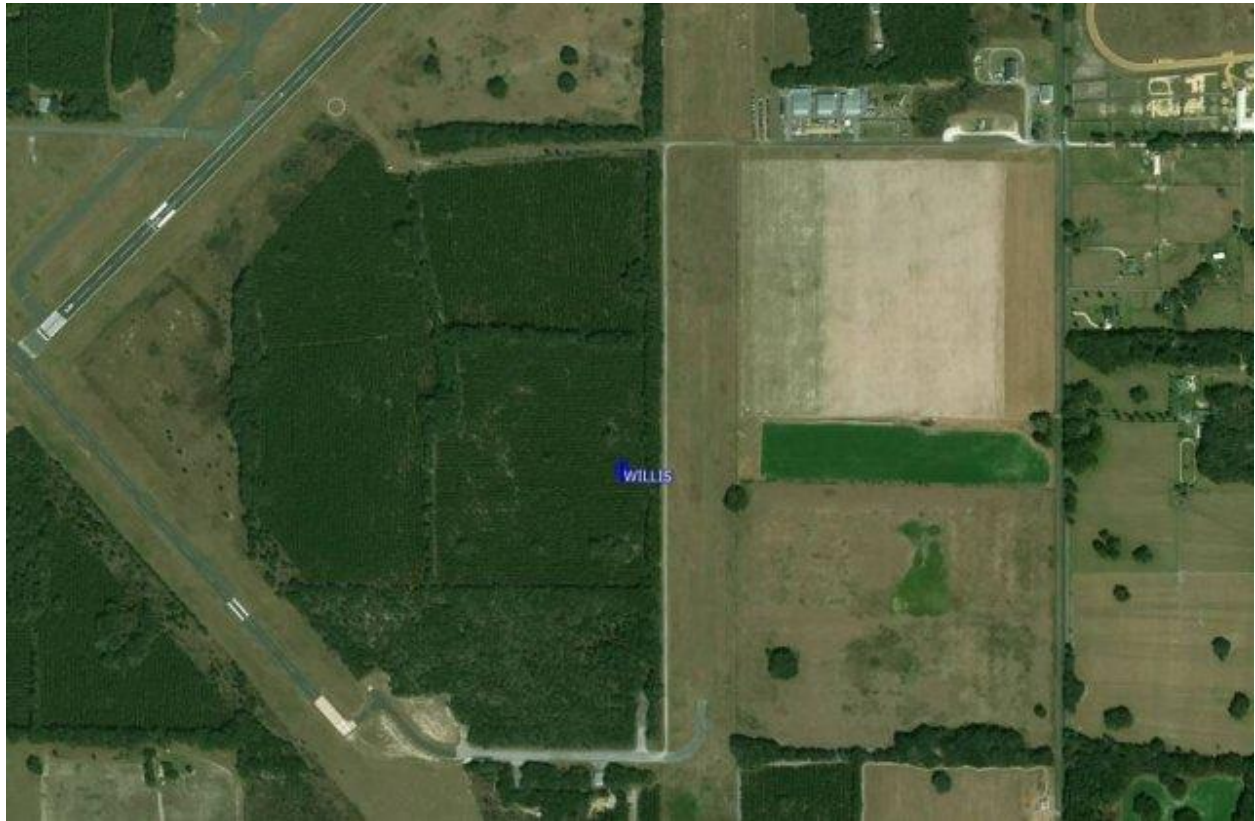


Designated Goals, Supplement to 2018 Quest Air National Series Risk Mitigation Plan

Williston Airfield:

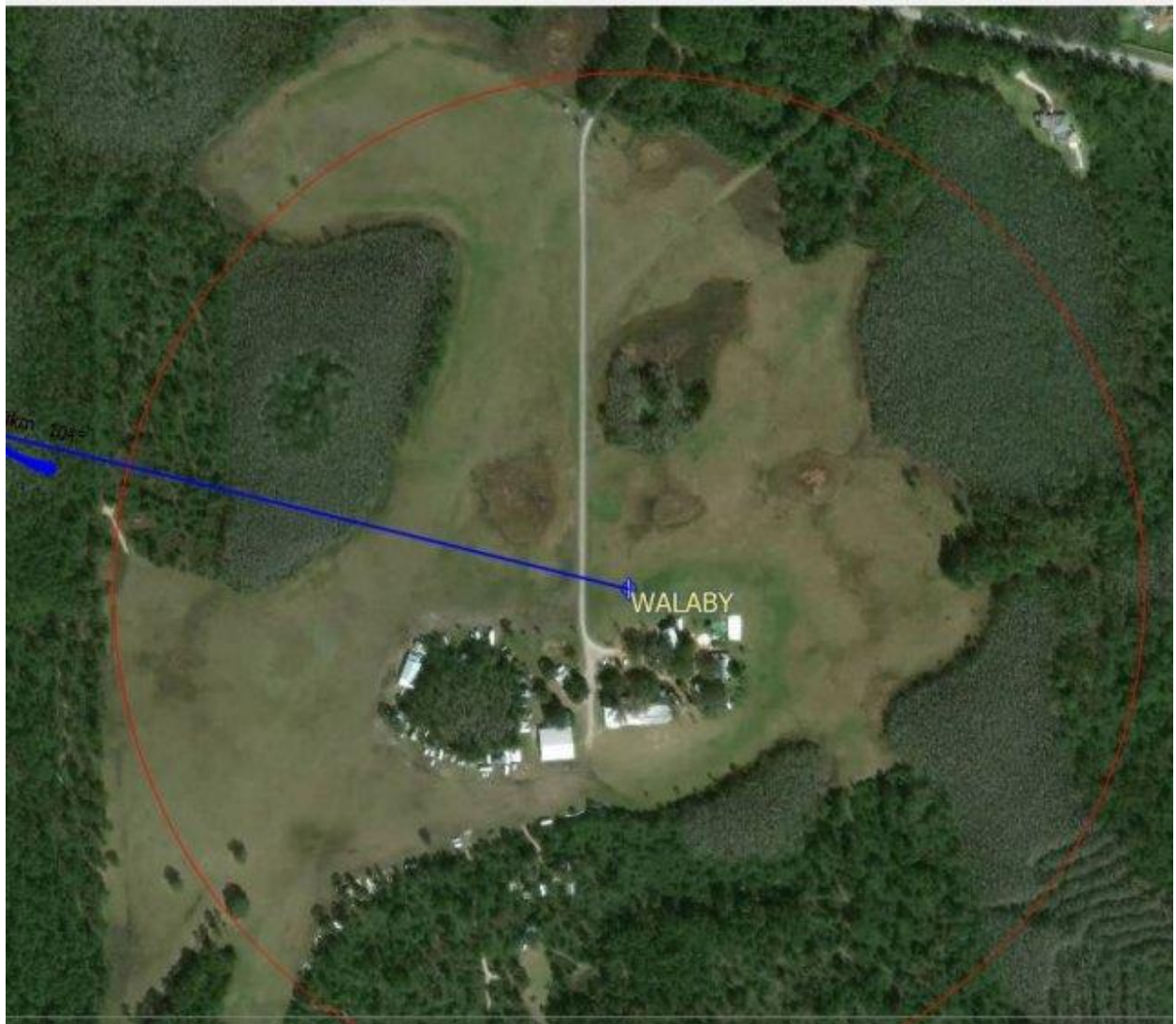
Coordinates: N29°21.011', W082°27.886'



Large pasture field just east of the airfield. 400-meter cylinder

Wallaby Ranch:

Coordinates: N28°15.179', W081°41.131'



Flight park, 400-meter cylinder

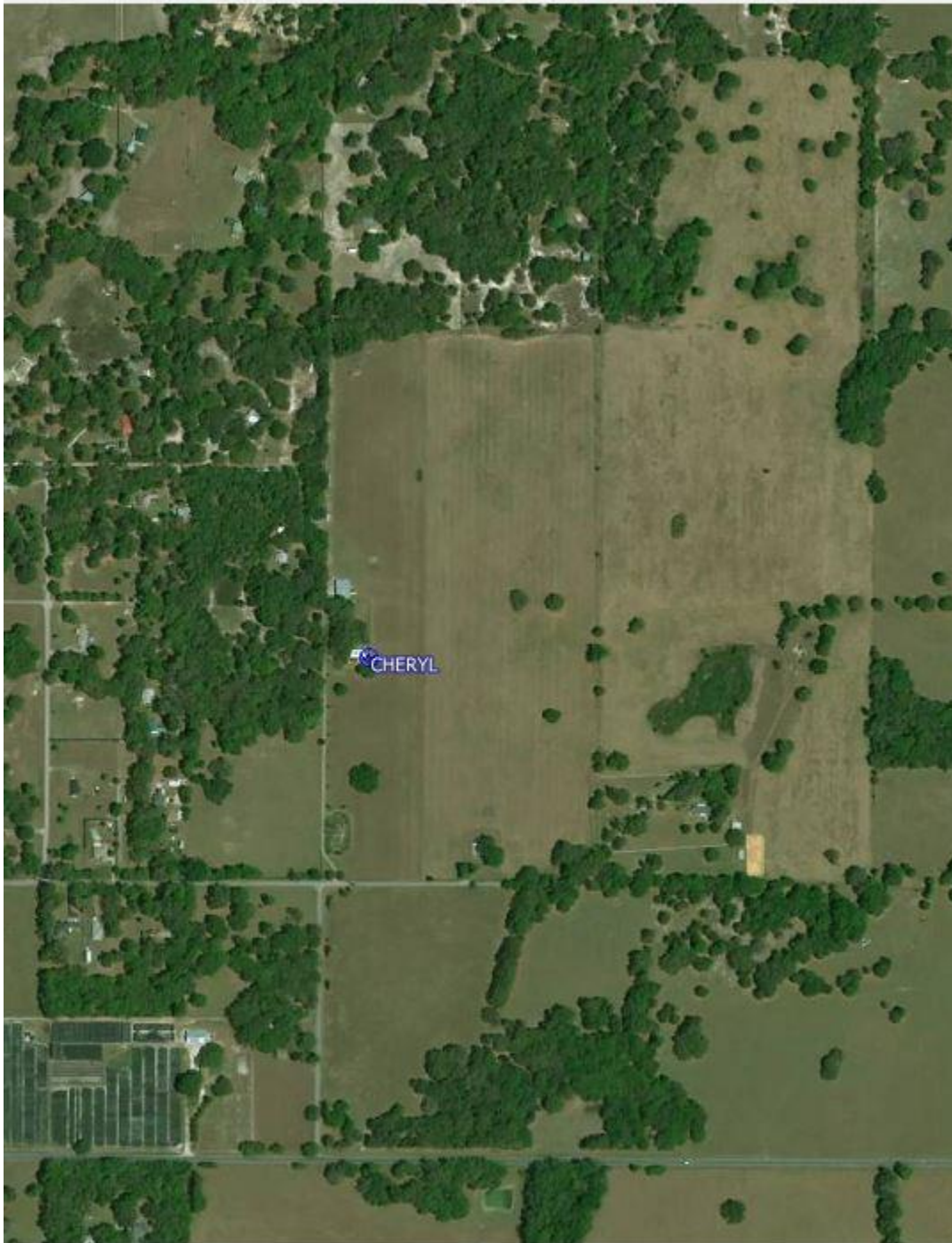
Inverness:

Coordinates: N28°48.467', W082°19.094'



Public airfield, north/south runway, 400-meter cylinder

Cheryl:
Coordinates: N28°40.286', W082°05.231'



Open pasture, 400-meter cylinder

Keystone Airfield:
Coordinates: N29°50.658', W082°02.992'



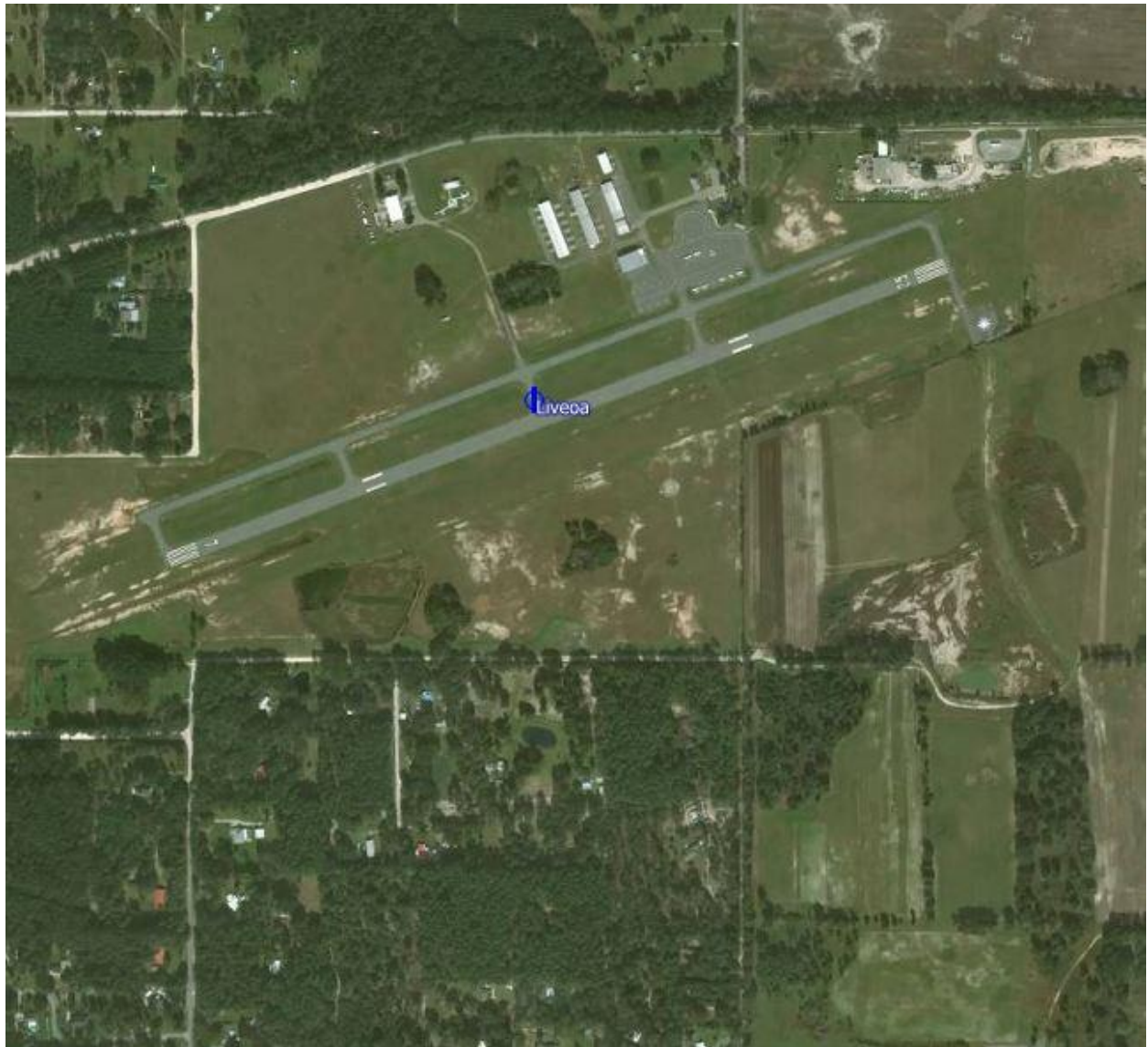
Large public airfield, 400-meter cylinder

Cross:
Coordinates: N29°38.096', W083°06.323'



County Airfield, 400-meter cylinder

Live Oak:
Coordinates: N30°18.036', W083°01.488'



County airfield, 400-meter cylinder

Dunnellon:
Coordinates: N29°03.626', W082°22.539'



Large public airfield, 400-meter cylinder

Leeward:

Coordinates: N29°05.058', W082°01.925'



Private airfield, no landing there. Land in the field on the south east, 1000-meter cylinder.

Greystone airfield:
Coordinates: N29°16.807', W082°07.479'



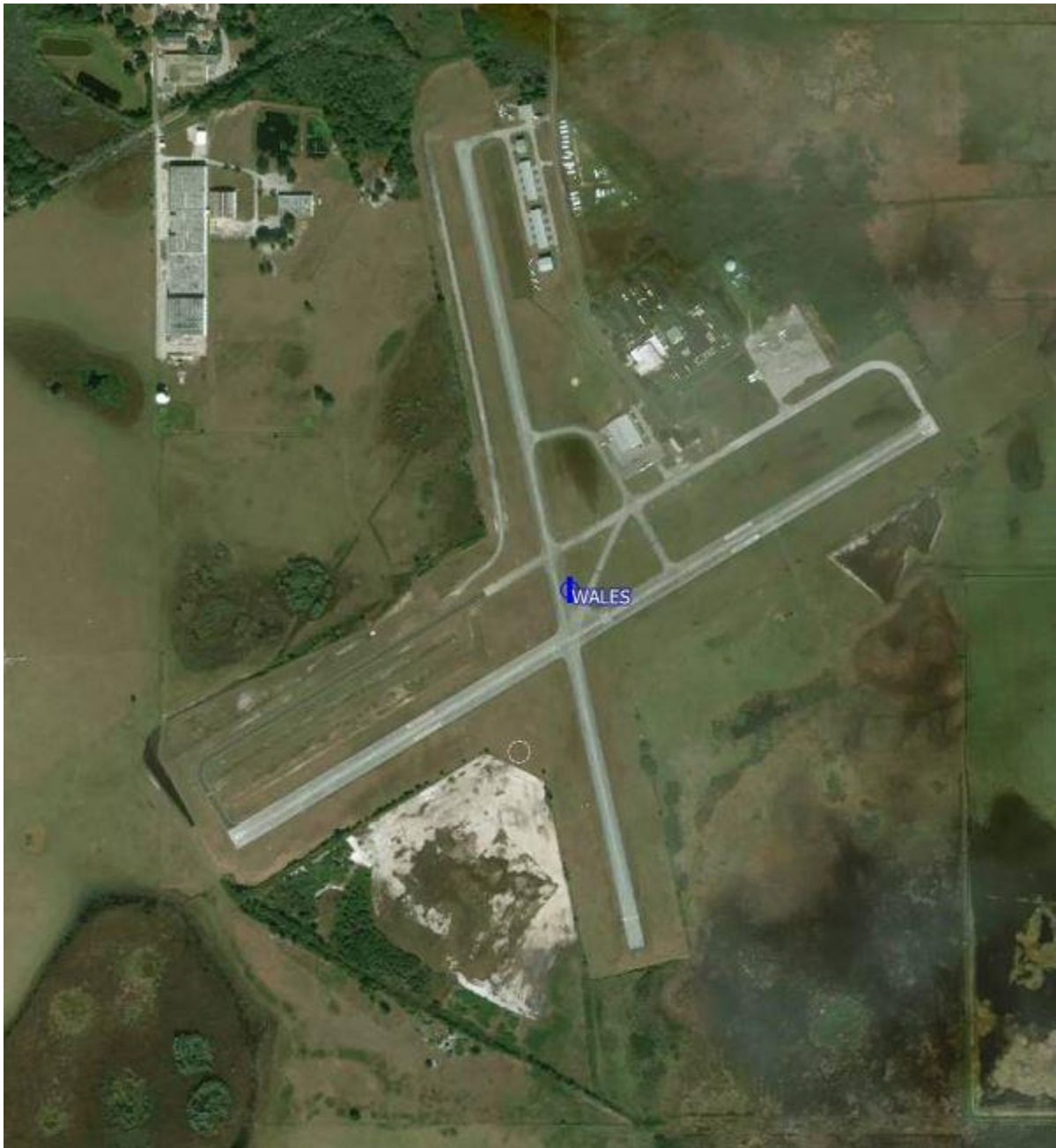
Private airfield, 400-meter cylinder.

Chalet Suzanne:
Coordinates: N27°57.422', W081°36.097'



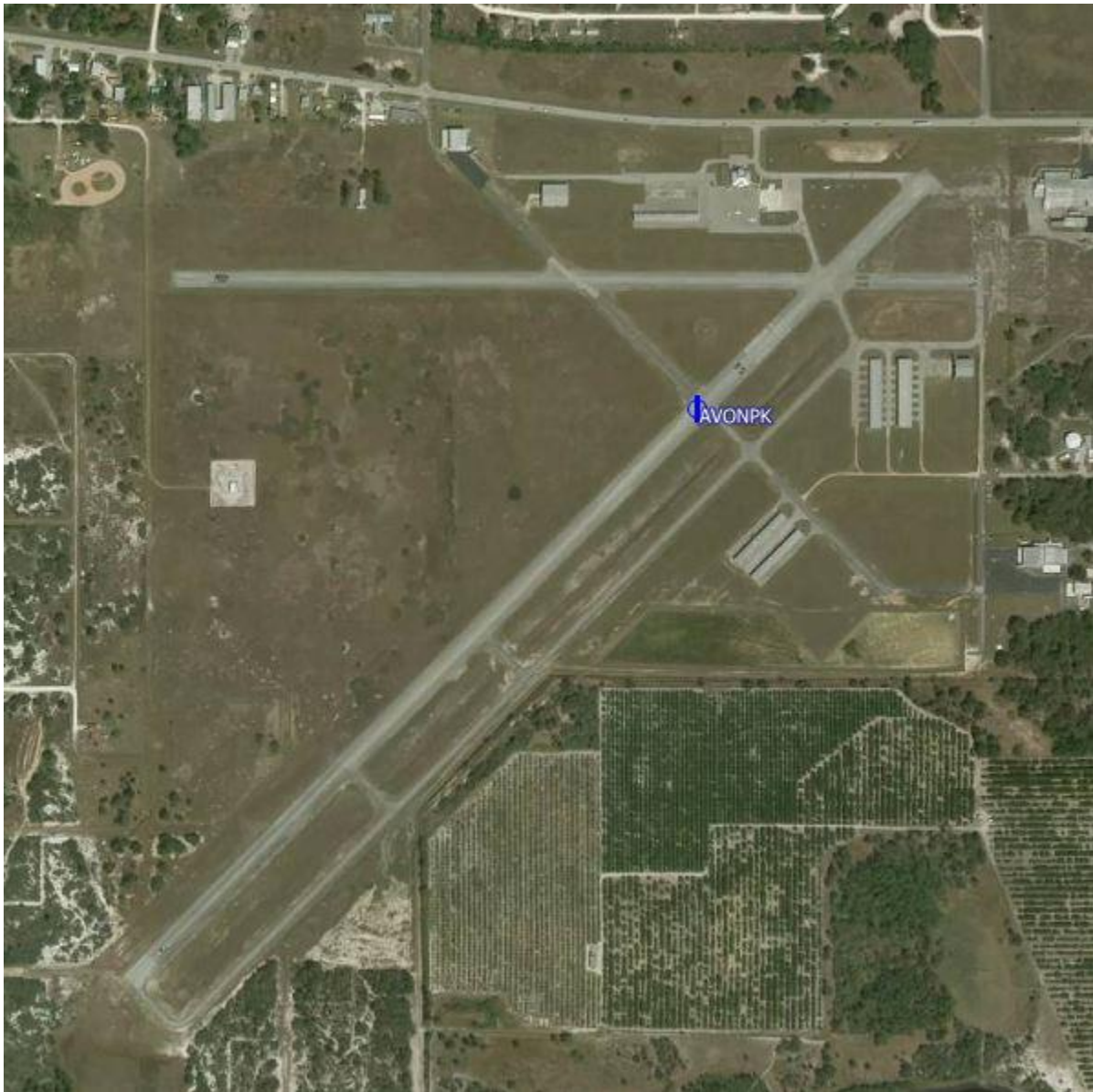
Private grass airstrip, 400-meter cylinder

Lake Wales airfield:
Coordinates: N27°53.628', W081°37.223'



Public airfield, drop zone, 400-meter cylinder

Avon Park:
Coordinates: N27°35.514', W081°31.612'



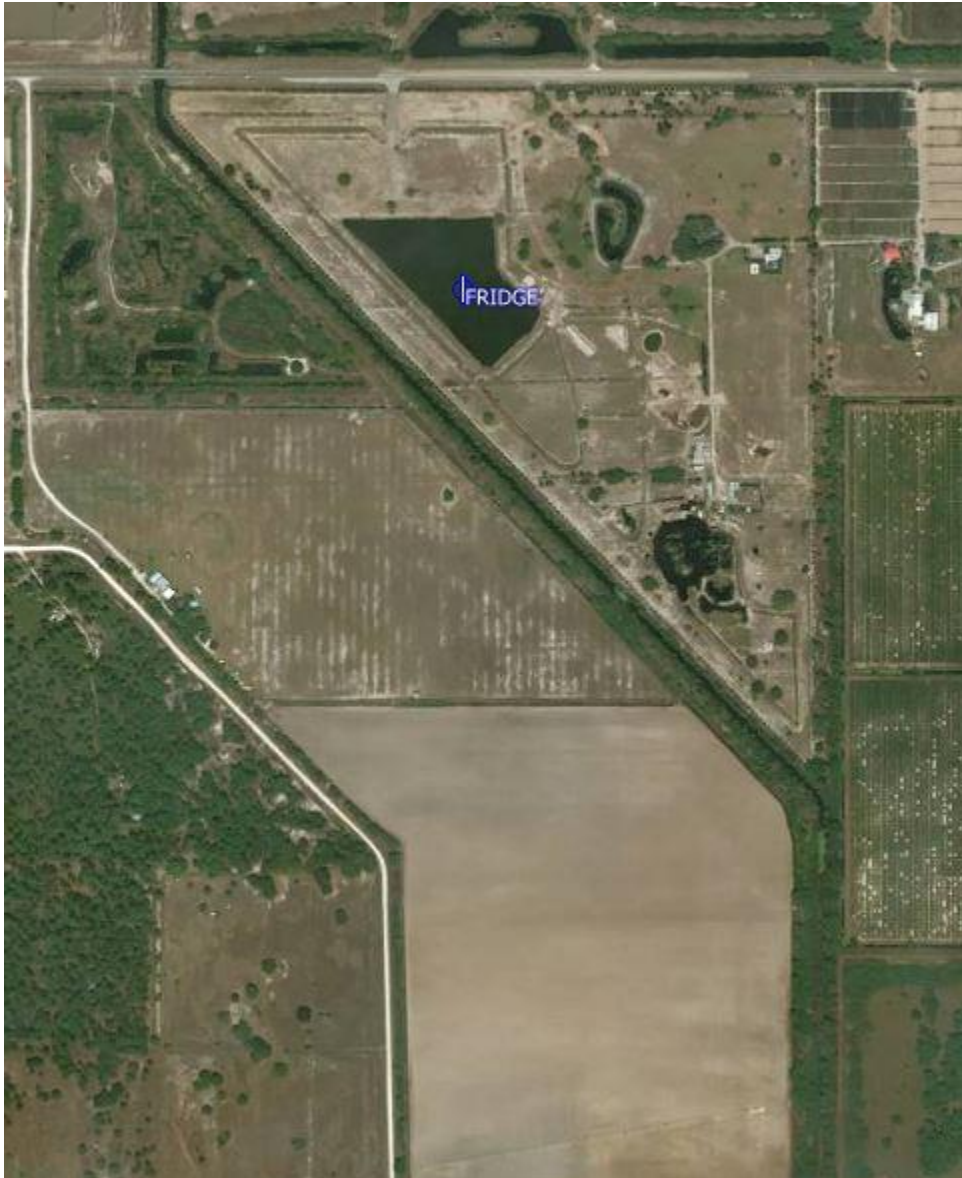
Public airfield, 400-meter cylinder

Lake Placid Airfield:
Coordinates: N27°15.124', W081°24.809'



Public airfield, 400-meter cylinder

The Florida Ridge:
Coordinates: N26°45.952', W081°13.747'



Hang Gliding flight park, 400-meter cylinder

Wachula airfield:

Coordinates: N27°30.832', W081°52.913'



Public airfield, 400-meter cylinder

Venice Beach and airfield:
Coordinates: N27°04.396', W082°27.054'



Venice Beach and airport, 2000-meter cylinder

Lake City:

Coordinates: N30°02.631', W082°36.240'



Private grass strip, 400-meter cylinder.

Crystal River:

Coordinates: N28°52.067', W082°34.442'



Public airport, 400-meter cylinder

Gross:

Coordinates: N28°38.733', W082°13.139'



Private runway, 400-meter cylinder